

FOR SALE

FIXED PRICE, ALL INCLUSIVE PACKAGE!



WOODLINKS



Jasmin 201

\$789,000

Lot 331, Woodlinks Village

MOVE IN MID 2026

The Jasmin gives room to move with effortless style. The open plan living area flows into the alfresco while the centrally located kitchen looks out over it all. A separate second living area has taken the whole family into account, extra storage in the garage provides functionality. Add to this a private master with ensuite and walk in robe and you have a home that is perfect for living and entertaining all year round.

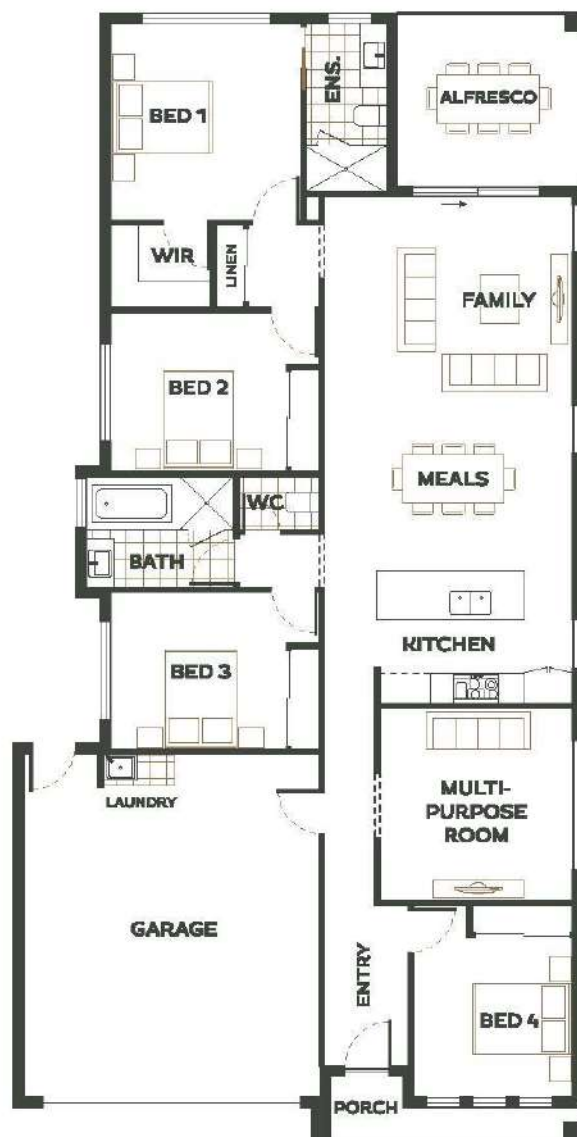
- ✓ Fixed price, completed home
- ✓ NBN and natural gas ready
- ✓ Full fencing and landscaping
- ✓ Designer front façade
- ✓ Higher ceilings (2590mm) throughout
- ✓ 2 x split cycle air-conditioners
- ✓ Ceiling fans
- ✓ LED downlights throughout



Total Home Area: 200.75m²

Block Size: 376m²

woodlinksvillage.com.au



*Fixed Price packages are only available for the specific lot and home advertised. Prices, availability and move in date are subject to change without notice. All illustrations & floor plans are artistic impressions & should only be used as a visual aid, colours are subject to change. February 2025.

WOODLINKS VILLAGE

Collingwood Park

Woodlinks Village developed by Village Building Co, is a master planned community that brings together affordable quality homes, green open spaces and easy access to established local amenities.

Located within easy walking distance, Woodlinks residents have direct access to the Collingwood Park Woolworths for everyday essentials. A short walk across the road you'll also find WoodLinks State School, one of the most sought after schools in the region.

Over 30% of the 78-hectare community is dedicated to parklands and open spaces. So, you can be sure the carefree family lifestyle and special pocket of Woodlinks Village you purchase today will stay that way for future generations to enjoy.

With established shopping centres, schools, transport plus so much more on your doorstep, Woodlinks Village is the perfect community to call home.

Get in touch with our friendly team today
on **0458 202 127** to find out more.



Woodlinks Village delivers an exceptional family-oriented lifestyle in a safe, friendly community



Location

- 8km to Springfield CBD
- 12km to Ipswich CBD
- 30km to Brisbane CBD

Connectivity

- Opposite WoodLinks State School
- Opposite Woolworths shops
- 5 minutes to Redbank Plaza Shopping Centre and Cinema Complex
- 5 minutes from Redbank Train Station

Community

- Predominately first home buyers, made up of couples and young families.

Infrastructure

- Ongoing public and private investment will continue to drive residential demand in the area.

Employment

- Ipswich is set to have the strongest job growth in South East Queensland over the 20 years to 2030 - Urbis.