

STRUCTURE NAME 3/2 1/4 2/4 E/4 1/4 E/5 J3/2 HTP1/6 HTP2/6 E/6 6/2 HTP1/7 HTP2/7 2/7 E/7 MH578372 EX10/1 E/8 2/2 1/15 2/15 3/15

STRUCTURE TYPE & DROP	G A	MS MS-A	MS MS-A	END	B MS MS-A	END	J HTP R1.00 HTP HTP	END	G A	45°	G A	END	B G	A	45°	B G	END	D	B MS MS-A	B MS MS-A	B MS MS-A	B MS MS-A	END
STRUCTURE LID TYPE	B	B	B																				
JUNCT. LINE No.	2	5			4		2		2				1	A									

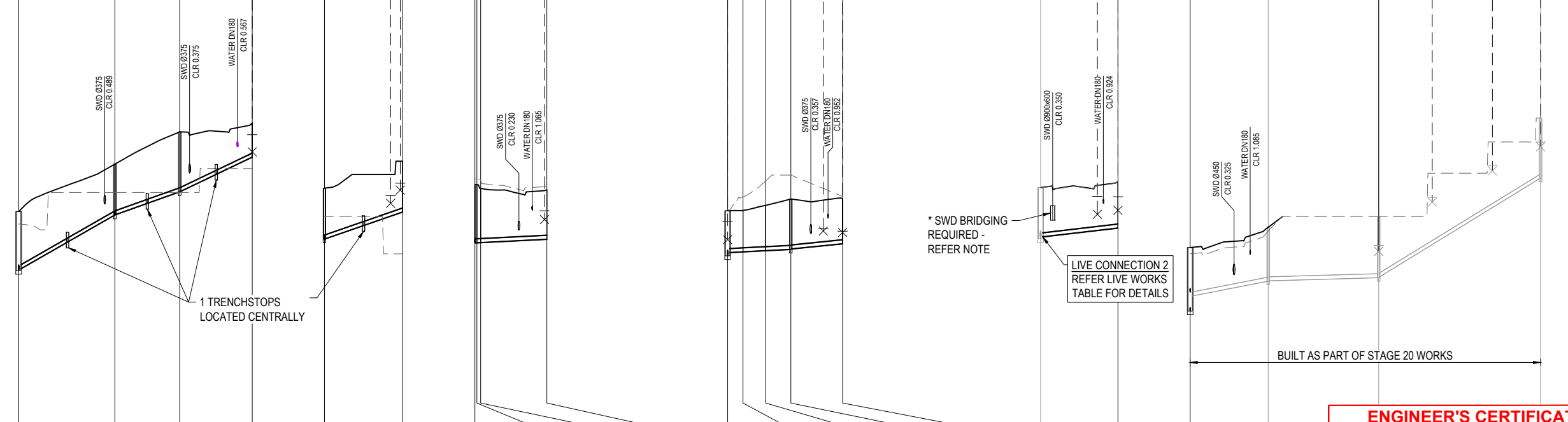
DEPTH TO HC																							
HC INVERT LEVEL																							
HC TYPE																							
HC LOT No.																							
CH FROM DS STRUCTURE																							

STRUCTURE TYPES
 G = CONCRETE 0.9000
 F = CONCRETE 1.2000
 X = CONCRETE 1.2000
 MS = PE 0.6000
MH DROP TYPES:
 AS PER SEQ STD DRG SEQ-SEW-1301 SERIES
MS DROP TYPES:
 MS-A = 20mm DROP THROUGH BULB
 MS-B = >750mm DROP INTO RISER
LID TYPES
 B = NON-TRAFFICABLE
 D = TRAFFICABLE
 D(BD) = TRAFFICABLE WITH BOLT DOWN

NOTE: PE LINING OF MAINTENANCE HOLES.
 MAINTENANCE HOLES ≥ 1500Ø IN DIA OR ≥ 4.0m IN DEPTH, REQUIRE PE LINED PROTECTIVE COATING

EMBEDMENT NOTE:
 PIPE EMBEDMENT & TRENCHFILL SHALL BE IN ACCORDANCE WITH SEQ-SEW-1200-2, 1201-1 TO 1201-5. TYPE 4 SUPPORT IS PROPOSED UNTIL FINAL GEOTECHNICAL INVESTIGATIONS ARE COMPLETED PRIOR TO CONSTRUCTION.

*** STORMWATER BRIDGING NOTE:**
 WHERE A STORMWATER PIPE ≥ 600mm DIA CROSSES OVER A SEWER, THE PIPE SHALL BE SUPPORTED BY A BRIDGE STRUCTURE THAT SPANS THE SEWER TRENCH. REFER COLLIER'S STD DRG S-100.



DATUM RL(m)	30.0				31.0					34.0					36.0					24.0				30.0					
LAND USE					ALLOTMENT					ROAD					ALLOTMENT					ROAD									
PIPE DIA & TYPE					DN160 PE100 SDR21					DN160 PE100 SDR21					DN160 PE100 SDR21					DN160 PE100 SDR21				PE100 SDR21 DN160					
PIPE GRADE (1 in x)					1 in 9.26 1-IN-9.994					1 in 13.83 1-IN-14.539					1 in 78.04 1-IN-100.000					1 in 40.46 1-IN-44.062				1 in 24.17 1-IN-26.660					
EMBEDMENT					TYPE 4					TYPE 4					TYPE 4					TYPE 4				1 IN 1					
JUNCTION INVERT LEVEL	37.333				39.576					42.409					44.006					32.661				36.205					
DEPTH TO INVERT	2.330 2.660				2.000 2.424					2.444 2.443					1.770 1.770					2.120 2.120				2.650 2.650					
SEWER INVERT LEVEL	37.250 37.250				37.576 37.152					42.409 42.409					44.006 43.970					32.661 32.710				36.205 36.205					
DESIGN SURFACE LEVEL	39.706 39.35				41.679 41.06					44.823 44.823					45.774 45.74					34.706 34.70				38.243 38.17					
EXISTING SURFACE LEVEL	39.186				40.500					45.062					45.774					34.695				37.950					
SETOUT	E6163.726				N4289.371					E6166.009					N4374.191					N4211.265				E6170.774					
RUNNING CHAINAGE	0.000				19.981					0.414					3.189					10.519				0.000					

LINE NUMBER LINE 4 LINE 5 LINE 6 LINE 7 LINE 8 LINE 15 URBAN UTILITIES REF. NUMBER : 24-PNT-76877

ENGINEER'S CERTIFICATION
 I, Daniel Collins, hereby certify that:
 1. The information contained in this drawing / document is in compliance with approved drawings and design.
 2. The new water and sewerage works defined by this drawing have been designed and constructed in accordance with the SEQ code.
 3. This generally represents an accurate record of as-constructed works
 4. I accept responsibility for the information contained in this drawing / document.
 RPEQ (Signature) RPEQ No. 18631 Date: 11/09/2025

<table border="1"> <tr> <th>REV</th> <th>DATE</th> <th>DESIGN</th> <th>DRAWN</th> <th>REVISION DETAILS</th> </tr> <tr> <td>0</td> <td>19.02.25</td> <td>CL</td> <td>AK</td> <td>ISSUED FOR CONSTRUCTION</td> </tr> <tr> <td>1</td> <td>11.09.25</td> <td>CL</td> <td>HC</td> <td>AS CONSTRUCTED</td> </tr> </table>	REV	DATE	DESIGN	DRAWN	REVISION DETAILS	0	19.02.25	CL	AK	ISSUED FOR CONSTRUCTION	1	11.09.25	CL	HC	AS CONSTRUCTED	<table border="1"> <tr> <th>DRAWN</th> <th>STATUS</th> </tr> <tr> <td></td> <td>AS CONSTRUCTED</td> </tr> </table>	DRAWN	STATUS		AS CONSTRUCTED		<table border="1"> <tr> <th>SCALE</th> </tr> <tr> <td>1:1000 10 0 10 20 30 40 50 A1</td> </tr> <tr> <td>1:2000 HORIZONTAL A3</td> </tr> <tr> <td>1:100 2 1 0 2 4 A1</td> </tr> <tr> <td>1:200 VERTICAL A3</td> </tr> </table>	SCALE	1:1000 10 0 10 20 30 40 50 A1	1:2000 HORIZONTAL A3	1:100 2 1 0 2 4 A1	1:200 VERTICAL A3	<table border="1"> <tr> <th>CLIENT</th> </tr> <tr> <td>CANBERRA ESTATES CONSORTIUM NO. 36 PTY LIMITED</td> </tr> <tr> <th>ASSOCIATED CONSULTANT</th> </tr> <tr> <td>SAUNDERS HAVILL GROUP PH: 1300 123 744</td> </tr> </table>	CLIENT	CANBERRA ESTATES CONSORTIUM NO. 36 PTY LIMITED	ASSOCIATED CONSULTANT	SAUNDERS HAVILL GROUP PH: 1300 123 744	<table border="1"> <tr> <th>PROJECT NAME</th> </tr> <tr> <td>WOODLINKS - STAGE 25</td> </tr> <tr> <th>COLLINGWOOD DRIVE</th> </tr> <tr> <td>COLLINGWOOD PARK</td> </tr> </table>	PROJECT NAME	WOODLINKS - STAGE 25	COLLINGWOOD DRIVE	COLLINGWOOD PARK	<table border="1"> <tr> <th>DRAWING TITLE</th> </tr> <tr> <td>SEWERAGE LONGITUDINAL SECTIONS SHEET 2 OF 4</td> </tr> <tr> <th>PROJECT No.</th> </tr> <tr> <td>23-0222</td> </tr> <tr> <th>DRAWING No.</th> </tr> <tr> <td>0521</td> </tr> <tr> <th>REVISION</th> </tr> <tr> <td>1</td> </tr> </table>	DRAWING TITLE	SEWERAGE LONGITUDINAL SECTIONS SHEET 2 OF 4	PROJECT No.	23-0222	DRAWING No.	0521	REVISION	1
REV	DATE	DESIGN	DRAWN	REVISION DETAILS																																										
0	19.02.25	CL	AK	ISSUED FOR CONSTRUCTION																																										
1	11.09.25	CL	HC	AS CONSTRUCTED																																										
DRAWN	STATUS																																													
	AS CONSTRUCTED																																													
SCALE																																														
1:1000 10 0 10 20 30 40 50 A1																																														
1:2000 HORIZONTAL A3																																														
1:100 2 1 0 2 4 A1																																														
1:200 VERTICAL A3																																														
CLIENT																																														
CANBERRA ESTATES CONSORTIUM NO. 36 PTY LIMITED																																														
ASSOCIATED CONSULTANT																																														
SAUNDERS HAVILL GROUP PH: 1300 123 744																																														
PROJECT NAME																																														
WOODLINKS - STAGE 25																																														
COLLINGWOOD DRIVE																																														
COLLINGWOOD PARK																																														
DRAWING TITLE																																														
SEWERAGE LONGITUDINAL SECTIONS SHEET 2 OF 4																																														
PROJECT No.																																														
23-0222																																														
DRAWING No.																																														
0521																																														
REVISION																																														
1																																														

PLOT: 11 Sep 2025 11:52 AM LOCATION: hanc corp localus_mhwa\scans\hpl\pnt\23-0222\woodlinks - stage 25\design\acad\asc\23-0222-06-11-SEWER_LAYOUT_AND_LS.dwg

STRUCTURE NAME

3/9 HTP/1/19 HTP/2/19 1/19 2/19 3/19 4/19 J2/2 HTP/1/28 HTP/2/28 E/28 J1/10 HTP/1/29 HTP/2/29 E/29 J1/2 HTP/1/33 HTP/2/33 E/33

STRUCTURE TYPE & DROP	A	HTP	17°	HTP	MS	MS-A	F	D	MS	MS-A	J	HTP	45°	HTP	END	J	HTP	45°	HTP	END
STRUCTURE LID TYPE	B	G	R6.00 H	HTP	B	B	B	D	B	B	B	HTP	R1.00 H	HTP	END	B	HTP	R1.00 H	HTP	END
JUNCT. LINE No.	9																			

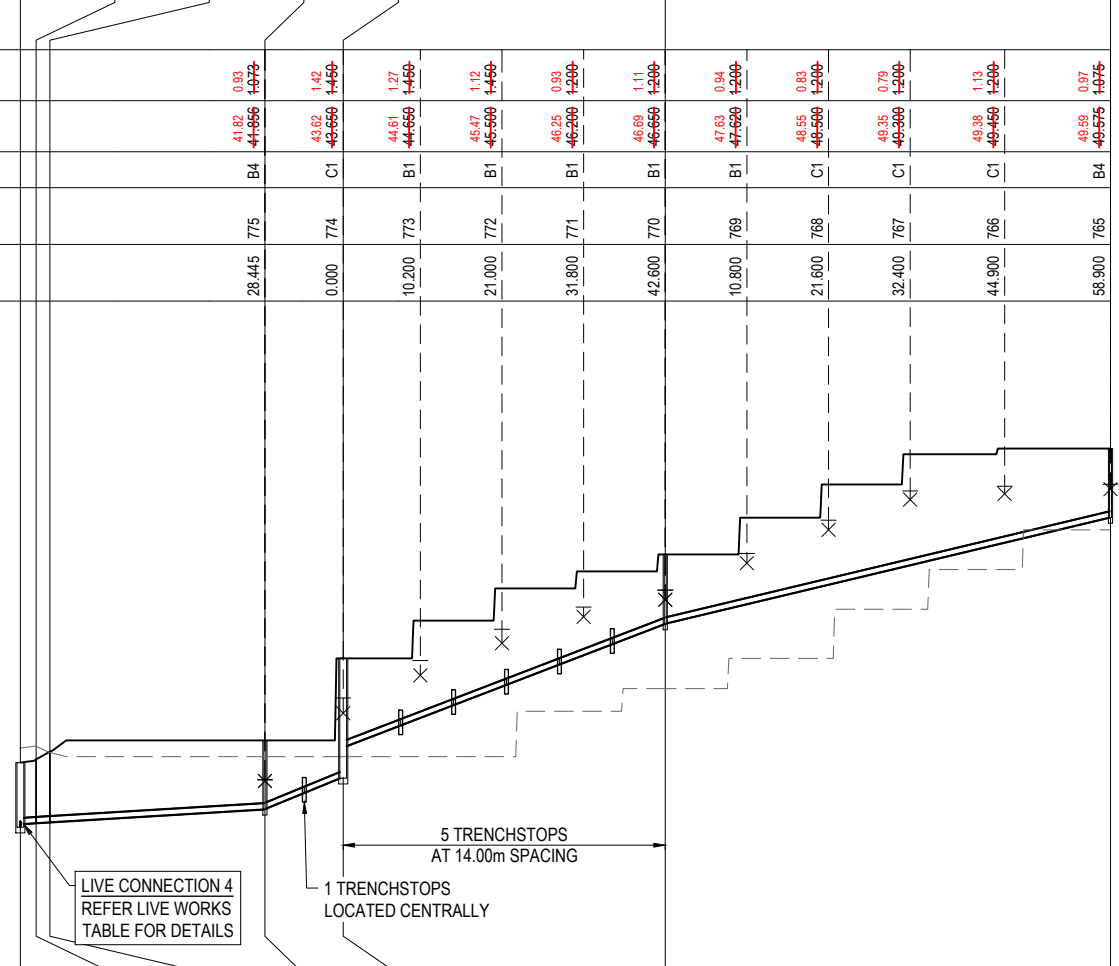
DEPTH TO HC																				
HC INVERT LEVEL																				
HC TYPE																				
HC LOT No.																				
CH FROM DS STRUCTURE																				

STRUCTURE TYPES
 G = CONCRETE 0.9000
 F = CONCRETE 1.2000
 X = CONCRETE 1.2000
 MS = PE 0.6000
MH DROP TYPES:
 AS PER SEQ STD DRG SEQ-SEW-1301 SERIES
MS DROP TYPES:
 MS-A = 20mm DROP THROUGH BULB
 MS-B = >750mm DROP INTO RISER
LID TYPES
 B = NON-TRAFFICABLE
 D = TRAFFICABLE
 D(BD) = TRAFFICABLE WITH BOLT DOWN

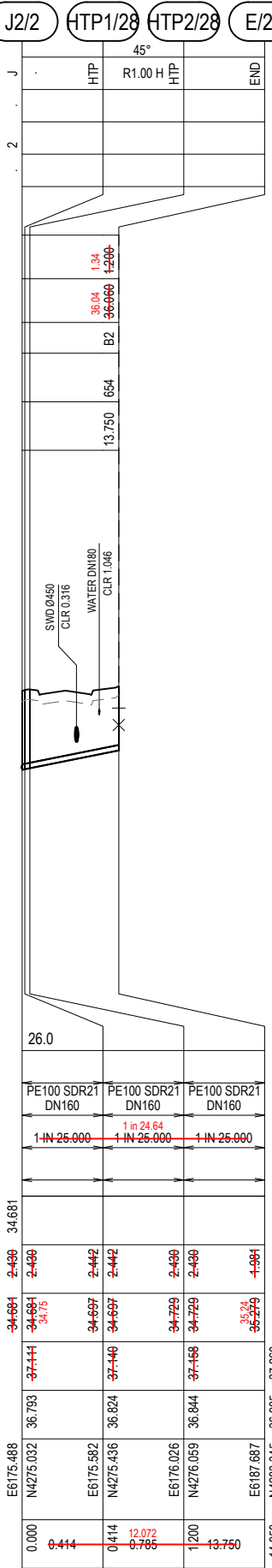
NOTE: PE LINING OF MAINTENANCE HOLES:
 MAINTENANCE HOLES ≥ 1500mm IN DIA OR ≥ 4.0m IN DEPTH, REQUIRE PE LINED PROTECTIVE COATING

EMBEDMENT NOTE:
 PIPE EMBEDMENT & TRENCHFILL SHALL BE IN ACCORDANCE WITH SEQ-SEW-1200-2, 1201-1 TO 1201-5. TYPE 4 SUPPORT IS PROPOSED UNTIL FINAL GEOTECHNICAL INVESTIGATIONS ARE COMPLETED PRIOR TO CONSTRUCTION.

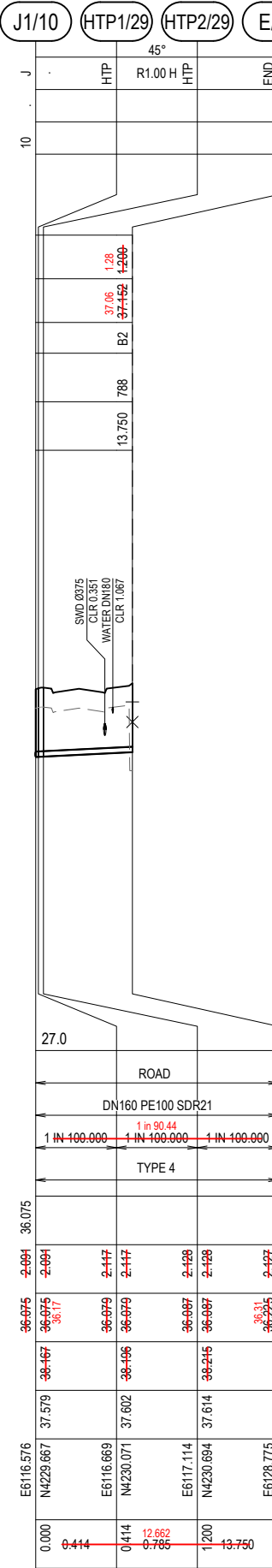
*** STORMWATER BRIDGING NOTE:**
 WHERE A STORMWATER PIPE ≥ 600mm DIA CROSSES OVER A SEWER, THE PIPE SHALL BE SUPPORTED BY A BRIDGE STRUCTURE THAT SPANS THE SEWER TRENCH. REFER COLLIERS STD DRG S-100.



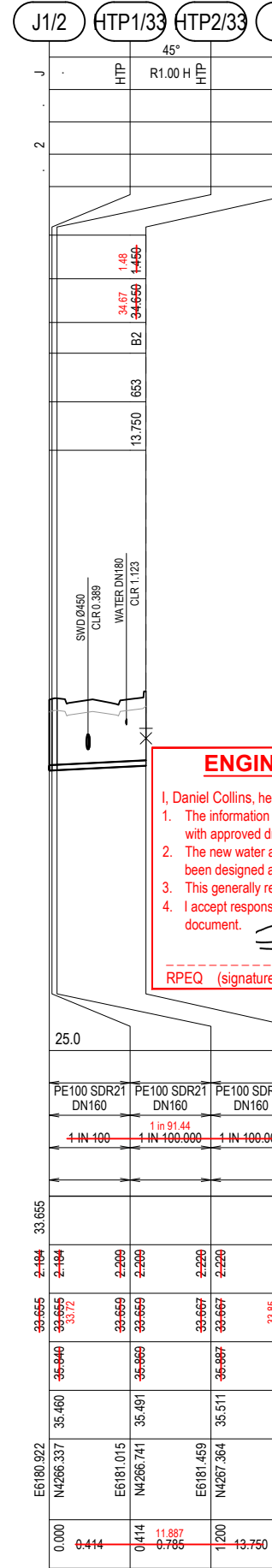
DATUM RL(m)	36.0																			
LAND USE	ALLOTMENT																			
PIPE DIA & TYPE	DN160 PE100 SDR21																			
PIPE GRADE (1 in x)	1 IN 83.333, 1 IN 85.51, 1 IN 83.333, 1 IN 11.90, 1 IN 12.500, 1 IN 13.45, 1 IN 13.108, 1 IN 24.64, 1 IN 24.036																			
EMBEDMENT	TYPE 4																			
JUNCTION INVERT LEVEL	40.718																			
DEPTH TO INVERT	1.500, 1.706, 1.656, 1.670																			
SEWER INVERT LEVEL	40.218, 40.718, 40.713, 40.743, 40.743, 40.765, 40.765, 41.10, 41.107, 41.103, 41.84, 41.865, 41.845, 42.755, 42.84, 45.05, 46.005, 46.037, 46.83, 46.825																			
DESIGN SURFACE LEVEL	42.345, 42.340																			
EXISTING SURFACE LEVEL	42.726, 42.774, 42.613, 42.500, 42.500, 42.500, 42.500, 44.300, 44.300, 36.824, 36.844, 37.458, 37.458, 36.985, 37.269																			
SETOUT	E6035.607, N4243.373, E6037.471, N4244.305, E6039.200, N4244.863, E6067.281, N4249.395, E6068.906, N4259.625, E6075.687, N4301.697, E6084.825, N4359.868, E6094.825, N4359.868																			
RUNNING CHAINAGE	0.000, 2.084, 2.084, 31.639, 1.824, 3.907, 28.445, 32.362, 9.837, 10.358, 42.710, 41.834, 42.698, 85.310, 144.210																			



LINE 28



LINE 29



LINE 33

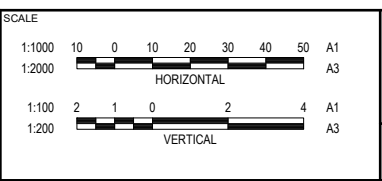
ENGINEER'S CERTIFICATION
 I, Daniel Collins, hereby certify that:
 1. The information contained in this drawing / document is in compliance with approved drawings and design.
 2. The new water and sewerage works defined by this drawing have been designed and constructed in accordance with the SEQ code.
 3. This generally represents an accurate record of as-constructed works
 4. I accept responsibility for the information contained in this drawing / document.
 RPEQ (signature) RPEQ No. 18631 Date: 11/09/2025

URBAN UTILITIES REF. NUMBER : 24-PNT-76877

PLOT - 11 Sep 2025 11:52 AM LOCATION - hanc corp local\us...
 Stage 25 Design\Acad\ASCON\S23\2222-2610-SEWER_LAYOUT AND L.S.png

REV	DATE	DESIGN	DRAWN	REVISION DETAILS
0	19.02.25	CL	AK	ISSUED FOR CONSTRUCTION
1	11.09.25	CL	HC	AS CONSTRUCTED

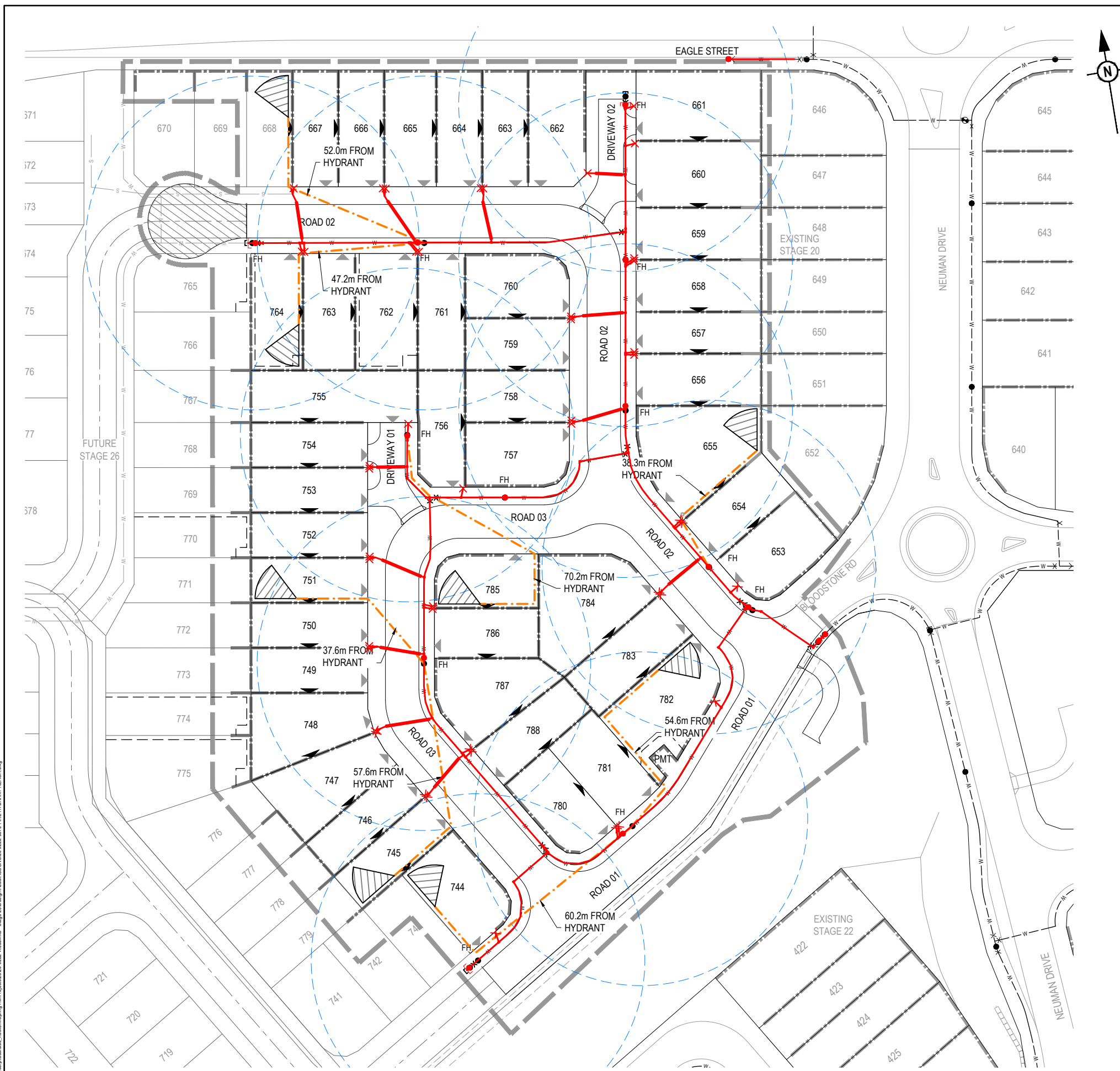
DRAWN	STATUS
AS CONSTRUCTED	
DESIGN	APPROVED
DANIEL COLLINS	RPEQ 18631
	DATE 11.09.25



CLIENT
CANBERRA ESTATES CONSORTIUM NO. 36 PTY LIMITED
 ASSOCIATED CONSULTANT
 SAUNDERS HAVILL GROUP
 PH: 1300 123 744

PROJECT NAME
WOODLINKS - STAGE 25
 COLLINGWOOD DRIVE
 COLLINGWOOD PARK

DRAWING TITLE		
SEWERAGE LONGITUDINAL SECTIONS SHEET 4 OF 4		
PROJECT No.	DRAWING No.	REVISION
23-0222	0523	1



LEGEND

- PROPOSED AREA OF WORKS
- PROPOSED WATER MAIN
- EXISTING WATER MAIN
- PROPOSED HYDRANT REACH (WORST CASE ALLOTMENT)
- FIRE HYDRANT SPACING (RADIUS 40m)
- HOSE SPRAY ARC (10m)
- FIRE HYDRANT COVER 80m MAX SPACING

NOTE:
 ALL FIRE HYDRANT LOCATIONS SHALL MEET CLASS 1 BUILDING COVERAGE REQUIREMENTS OF THE SEQ CODE. FIRE HYDRANT COVERAGE IS AS SHOWN AND DEMONSTRATES THE WORST POSSIBLE LOCATION OF ANY PROPOSED CLASS 1 BUILDING WITHIN 90m OF HYDRANT REACH.

AS CONSTRUCTED LEGEND

- WATER MAIN
- FIRE HYDRANT
- × WATER METER
-] DEAD END
- BEND & TEE
- + VALVE

ENGINEER'S CERTIFICATION

I, Daniel Collins, hereby certify that:

- The information contained in this drawing / document is in compliance with approved drawings and design.
- The new water and sewerage works defined by this drawing have been designed and constructed in accordance with the SEQ code.
- This generally represents an accurate record of as-constructed works.
- I accept responsibility for the information contained in this drawing / document.

RPEQ (signature) RPEQ No. 18631 Date: 11/09/2025

RP DESCRIPTION
 LOT 5007 ON SP 317659

DATUM LEVEL AND LOCATION:
 P.S.M. 110122 RL 40.320 AHD

URBAN UTILITIES REF. NUMBER. :

REV	DATE	DESIGN	DRAWN	ISSUED FOR CONSTRUCTION	REVISION DETAILS
0	19.02.25	CL	AK	ISSUED FOR CONSTRUCTION	
1	11.09.25	CL	HC	AS CONSTRUCTED	

DRAWN	STATUS
AS CONSTRUCTED	

DESIGN	APPROVED	RPEQ	DATE
	DANIEL COLLINS	18631	11.09.25

FOR AND ON BEHALF OF COLLIER'S INTERNATIONAL ENGINEERING & DESIGN PTY LTD



SCALE

1:500 10 5 0 10 20 A1
 1:1000

CLIENT
CANBERRA ESTATES CONSORTIUM NO. 36 PTY LIMITED

ASSOCIATED CONSULTANT
 SAUNDERS HAVILL GROUP
 PH: 1300 123 744

PROJECT NAME
WOODLINKS - STAGE 25

COLLINGWOOD DRIVE
 COLLINGWOOD PARK

DRAWING TITLE		
FIRE HYDRANT REACH LAYOUT PLAN		
PROJECT No.	DRAWING No.	REVISION
23-0222	0570	1

PLOT - 11 Sep 2025 11:53 AM LOCATION - lanc corp localities - lanc corp localities - lanc corp localities - Stage 25 Design - Acad/AS/CON/SP/317659-FIRE HYDRANT REACH.dwg