

COMPLETED HOME

BRAND NEW • FIXED PRICE • NO PROGRESS PAYMENTS!



Ava 134a
\$845,000

Lot 722, Woodlinks Village

MOVE IN MID 2027*

Cleverly designed to make the most of small spaces, the Ava has everything you need. You'll love the Master bedroom with ensuite, spacious kitchen with walk in pantry and outdoor entertaining space, a real place to call home. With a flow through design, 3 bedrooms and courtyard style living - this low maintenance home means more time for you. Perfect for first home buyers and downsizers, The Ava is where style meets comfort and affordability.

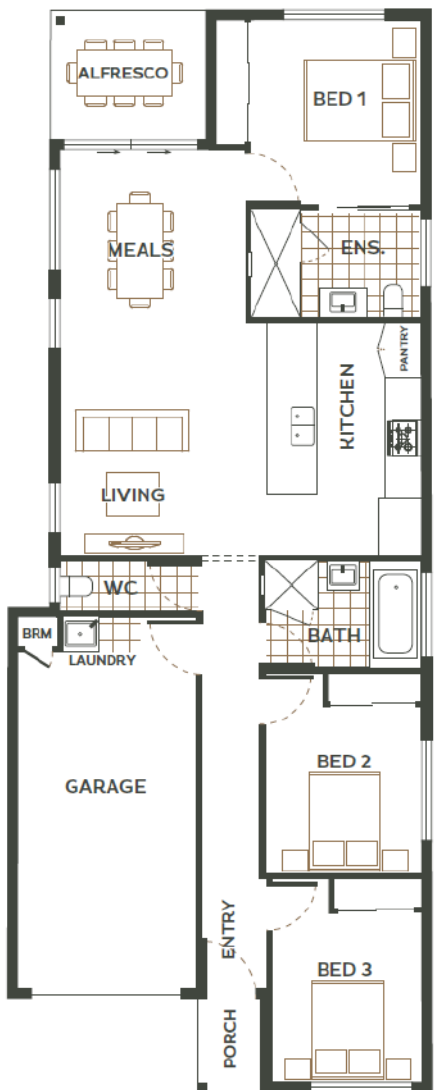
- ✓ Fixed price, completed home
- ✓ NBN ready
- ✓ Full fencing and landscaping
- ✓ Designer front façade
- ✓ Higher ceilings (2590mm) throughout
- ✓ 2 x split cycle air-conditioners
- ✓ Ceiling fans
- ✓ LED downlights throughout

3
1
2

Total Home Area: 133.79m²

Block Size: 300m²

woodlinksvillage.com.au



*Fixed Price homes are only available for the specific lot and home advertised. Prices, availability and move in date are subject to change without notice. All illustrations & floor plans are artistic impressions & should only be used as a visual aid, colours are subject to change. May 2026.

WOODLINKS VILLAGE

Collingwood Park

Woodlinks Village developed by Village Building Co, is a master planned community that brings together affordable quality homes, green open spaces and easy access to established local amenities.

Located within easy walking distance, Woodlinks residents have direct access to the Collingwood Park Woolworths for everyday essentials. A short walk across the road you'll also find WoodLinks State School, one of the most sought after schools in the region.

Over 30% of the 78-hectare community is dedicated to parklands and open spaces. So, you can be sure the carefree family lifestyle and special pocket of Woodlinks Village you purchase today will stay that way for future generations to enjoy.

With established shopping centres, schools, transport plus so much more on your doorstep, Woodlinks Village is the perfect community to call home.

Get in touch with our friendly team today on
0458 202 127 to find out more.



Woodlinks Village delivers an exceptional family-oriented lifestyle in a safe, friendly community



Location

- 8km to Springfield CBD
- 12km to Ipswich CBD
- 30km to Brisbane CBD

Connectivity

- Opposite WoodLinks State School
- Opposite Woolworths shops
- 5 minutes to Redbank Plaza Shopping Centre and Cinema Complex
- 5 minutes from Redbank Train Station

Community

- Predominately first home buyers, made up of couples and young families.

Infrastructure

- Ongoing public and private investment will continue to drive residential demand in the area.

Employment

- Ipswich is set to have the strongest job growth in South East Queensland over the 20 years to 2030 - Urbis.