

FIXED PRICE, ALL INCLUSIVE PACKAGE BRAND NEW HOME, UNDER CONSTRUCTION!



Save \$20k* on selected fixed price all inclusive House and Land Packages for the next 20 days!
\$20k
for 20 Days!

\$890,000 *fixed price*
~~\$910,000~~

**Lot 675, Woodlinks Village
 ISLA 180a
 MOVE IN EARLY 2027***

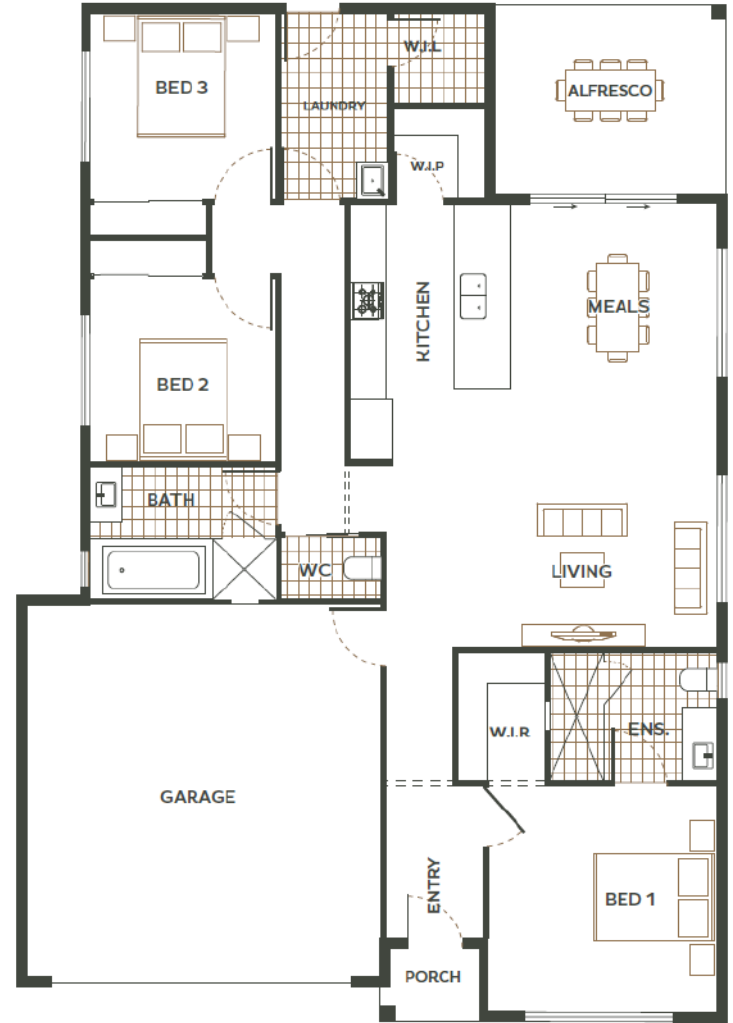
The Isla 180 pairs modern style with effortless functionality. Its open-plan kitchen, living and meals area flows naturally to the alfresco, creating the perfect space for everyday living. A private master suite offers a peaceful retreat, while the separate bedrooms provide a dedicated family zone. Clever storage and a walk-in pantry make life simple, leaving you with a home that feels balanced, welcoming and thoughtfully designed.

- ✓ Fixed price, completed home
- ✓ NBN ready
- ✓ Full fencing and landscaping
- ✓ Designer front façade
- ✓ Higher ceilings (2590mm) throughout
- ✓ 2 x split cycle air-conditioners
- ✓ Ceiling fans
- ✓ LED downlights throughout

3
2
2

Total Home Area: 179.94m²
Block Size: 364m²

woodlinksvillage.com.au



*Fixed Price packages are only available for the specific lot and home advertised. Prices and availability are subject to change without notice. All illustrations & floor plans are artistic impressions & should only be used as a visual aid, colours are subject to change. June 2026. \$20k for 20 days Terms & Conditions apply.

WOODLINKS VILLAGE

Collingwood Park

Woodlinks Village developed by Village Building Co, is a master planned community that brings together affordable quality homes, green open spaces and easy access to established local amenities.

Located within easy walking distance, Woodlinks residents have direct access to the Collingwood Park Woolworths for everyday essentials. A short walk across the road you'll also find WoodLinks State School, one of the most sought after schools in the region.

Over 30% of the 78-hectare community is dedicated to parklands and open spaces. So, you can be sure the carefree family lifestyle and special pocket of Woodlinks Village you purchase today will stay that way for future generations to enjoy.

With established shopping centres, schools, transport plus so much more on your doorstep, Woodlinks Village is the perfect community to call home.

Get in touch with our friendly team today on
0458 202 127 to find out more.



Woodlinks Village delivers an exceptional family-oriented lifestyle in a safe, friendly community



Location

- 8km to Springfield CBD
- 12km to Ipswich CBD
- 30km to Brisbane CBD

Connectivity

- Opposite WoodLinks State School
- Opposite Woolworths shops
- 5 minutes to Redbank Plaza Shopping Centre and Cinema Complex
- 5 minutes from Redbank Train Station

Community

- Predominately first home buyers, made up of couples and young families.

Infrastructure

- Ongoing public and private investment will continue to drive residential demand in the area.

Employment

- Ipswich is set to have the strongest job growth in South East Queensland over the 20 years to 2030 - Urbis.